

Sunday,
August 21,
2016

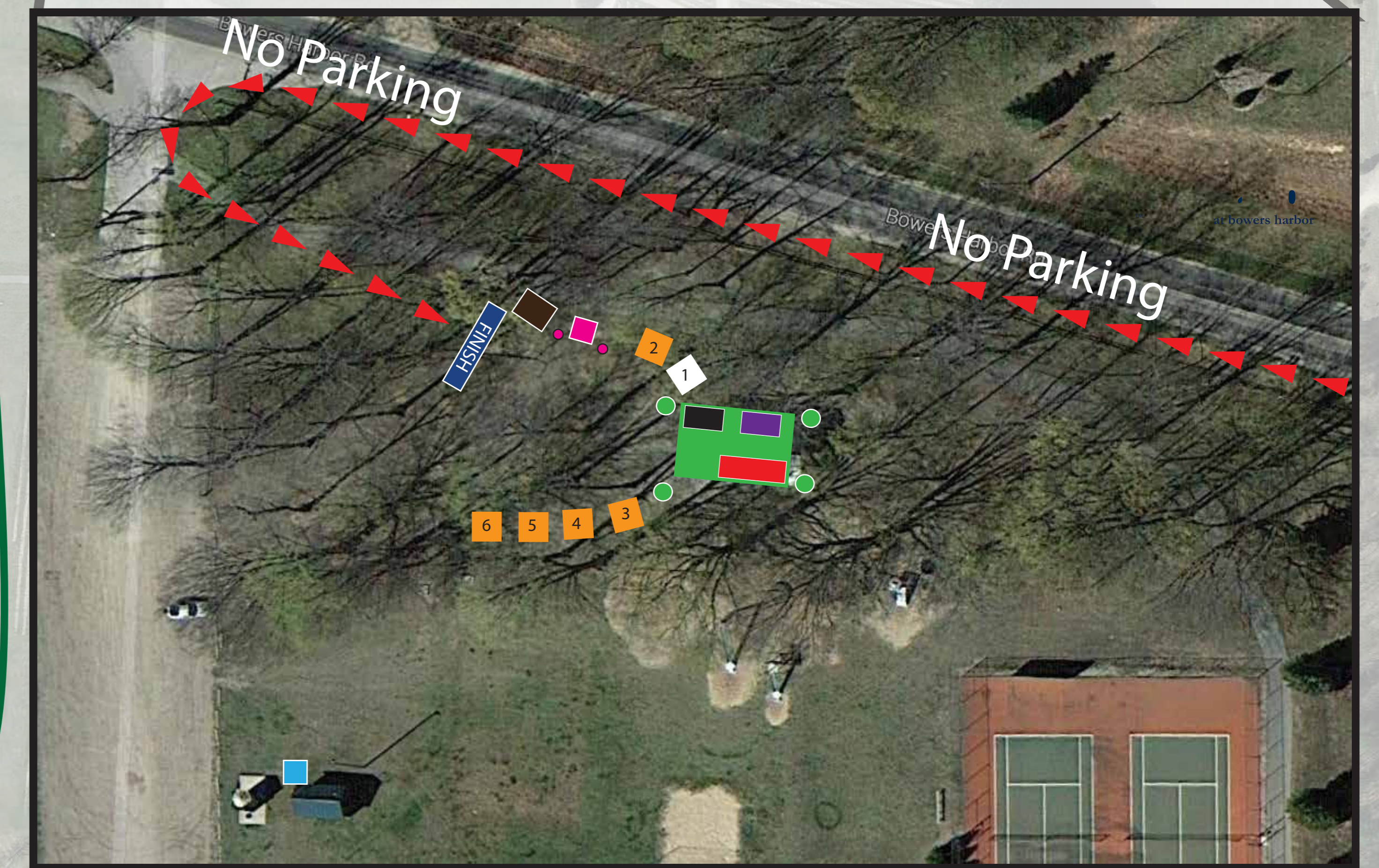
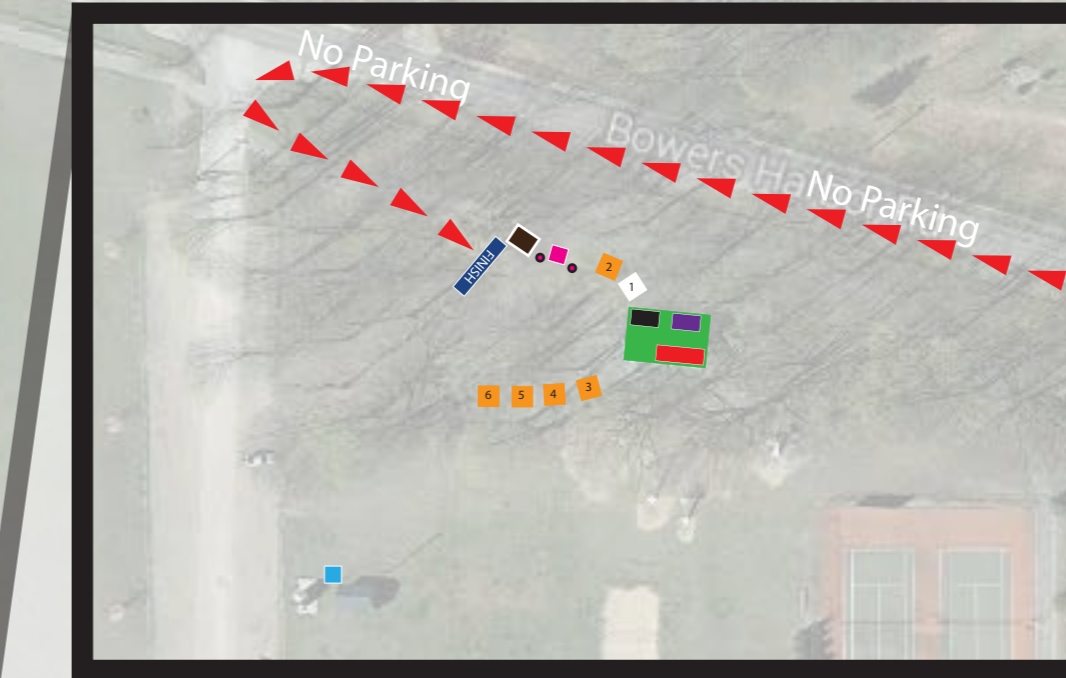
Site Plan Overview

Notes

- Event parking will be at the Bowers Harbor Park addition off Devils Dive Rd.
- All roads will be open to vehicle traffic
- Volunteers will be located at intersections to guide cyclists and runners
- Police will be located at critical intersections to assist with traffic control
- Bowers Harbor Park and the DNR boat launch will remain open for public use
- Emergency Medical Services will be stationed throughout the course and at Bowers Harbor
- Distance from start/transition area to parking area is a little more than .5 mile.

KEY

- Covered pavilion
- Registration
- Volunteer Check In
- Path to transition
- Food tent
- Sponsor tents
- Merchandise tent
- Timing
- Announcer/PA
- PA Speaker
- Finish Arch
- Bike Course
- Run Course
- ▲ Run Finish
- Toilets
- Waste Disposal



start/transition area

440'
parking
420'

Peninsula Dr.

Devils Dive Rd.

Devils Dive Rd.

Seven Hills Rd.